

SUPERSTALL INSTALLATION INSTRUCTIONS

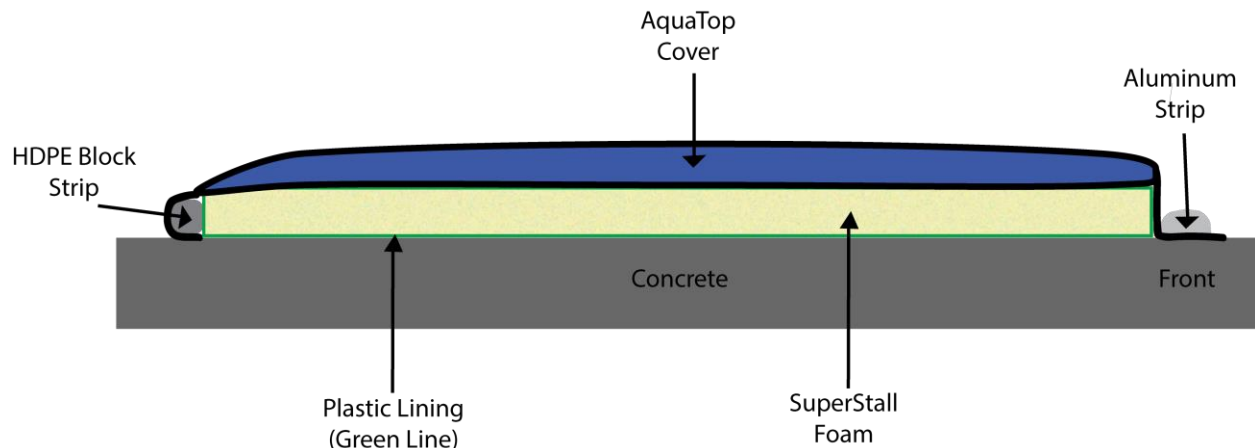
Supplied Material:

- SuperStall Foam Mattress
- Aquatop
- Galvanized Nails
- PVC block strips
- PVC strips
- Tapcon Concrete Anchors
- 6mm Drill Bit

Material to have for the installation:

- 1 Hammer Drill
- 1 Hammer
- 1 Extension cable
- 1 chalk line
- Gloves
- 1 Set square (optional)
- Sledgehammers and wood battens to tighten up the foam sheets between them, every 4 sheets
- Ratchet straps, at least 4.
- Concrete Drill bit diameter 6mm for nails; diameter 6.5mm; length 100mm minimum (10 for 50 places)

**PLEASE READ ALL INSTRUCTIONS COMPLETELY BEFORE PERFORMING INSTALLATIONS.
FAILURE TO FOLLOW INSTRUCTIONS WILL INVALIDATE ANY WARRANTY.**





North Brook Farms, INC.
89 York Street
Auburn, NY 13021
Phone: 1.877.624.2638
Email: Info@Northbrookdairy.com
www.northbrookdairy.com

1) Installing the Topcover

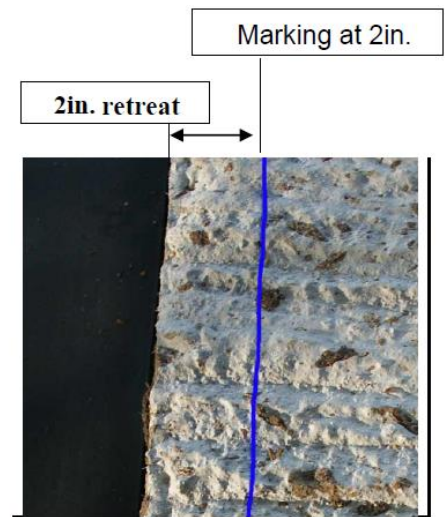
Before starting the installation, check on all the lengths of the stalls to ensure the consistent length of the stalls and that the concrete curb is square.

Trace a chalk marking at 2 in. from the rear of the stall with a chalk line. (See the installation plan page 1)

Place the Aquatop in line with the marking. The marking needs to stay visible.

Then, attach the Aquatop using the black PVC block strip. Place strip 1/8" inside the edge of the topcover towards the back curb of the stall. The initial PVC block strip should be attached at one end of the run of stalls.

For any run length greater than 15 ft you have to attach the first PVC block strip and then stretch the topcover from the other extremity with a truck lashing straps.



The topcover attachment at the rear of the stall is done with PVC block strips and nails: **one nail every 11 in. means 8 nails per block strip; use predrilled holes.**

Important – Leave 1 foot of topcover at each end to attach the ends of the run with PVC strips.

2) Install the Plastic Film: The plastic comes in 12ft wide x 100ft rolls. Unfold the plastic so that the middle of the sheet lines up with the PVC block strip at the back curb of the stall. Half of the

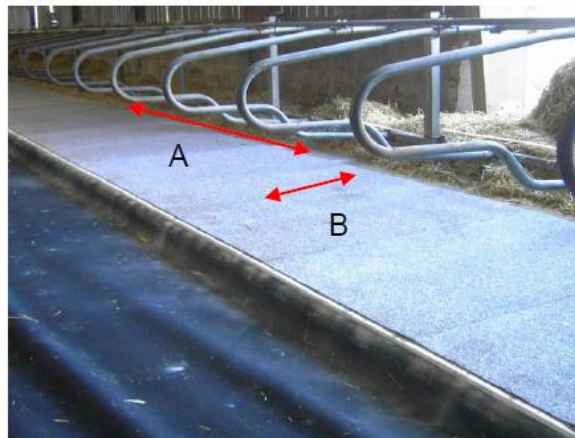


North Brook Farms, INC.
89 York Street
Auburn, NY 13021
Phone: 1.877.624.2638
Email: Info@Northbrookdairy.com
www.northbrookdairy.com

plastic should be on the exposed concrete of the stall base and the other half should lay on top of the topcover laying in the alleyway. See picture below.






3) Install the Foam sheet: The Superstall foam comes in 45in wide x 66in long sections. Sections should be wedged against the PVC block strip in the back of the stall. Place or push them together down the length of the stalls so that the foam pieces lay snugly next to each other. Use your foot to kick or a hammer and piece of wood to push the foam firmly next to each other.



- A direction: Push the foam pieces together every 4 sheets either by kicking with your foot or hitting with a piece of wood and hammer to create a snug fit between foam pieces leaving no gaps.
- B direction: Line up all the sheets along the length against the PVC Block in the rear of the stall.
- ➔ Fold up the plastic film over the sheets in such a way as to enclose the foam.

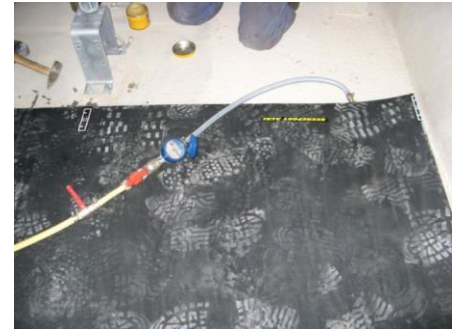
4) Folding the AquaTop over the foam pieces: Before you pull the AquaTop cover over the foam, be sure to sweep the underside of it. Fold the Aquatop cover from the rear of the stall to the front, stretching it firstly by hand, then with ratchet straps. Be sure to position the AquaTop cover so that there are no wrinkles.

5) The tension of the topcover is an important step!

<p>1) a- At 2 in from the edge of the topcover cut 2 holes, each 1 in width to insert the hooks of your truck lashing strap. Use a hook type strap or vice grips attached to the straps.</p> <p>b- Use the ratcheting system every 3 – 5 stalls over the entire length of the run.</p> <p>c- Stop pulling the topcover when the first waves or ripples appear around the hooks or vise grips.</p>	
<p>2) Using the flat PVC strip and tapcon screws or galvanized nails, attach the topcover every foot at the front of the stall.</p> <p>Once the topcover is secure, release the tension from the ratchet straps and continue working down the length of the run.</p>	
<p>3) Fix the topcover with the aluminum strips on the front of the stall and at each length following the attachment diagram page 1.</p>	



North Brook Farms, INC.
89 York Street
Auburn, NY 13021
Phone: 1.877.624.2638
Email: Info@Northbrookdairy.com
www.northbrookdairy.com



6. Filling the AquaTop with water:

- a. Each stall has an opening where you are to fill the water pouch. Punch a hole in the fill channel for the clamp to eventually close the fill channel. Insert fill tube in channel far enough that tube reaches the water chamber
- b. Fill the AquaTop using a water volume meter:
 - Mattress width 45in= 9.5 Gallons (36 liters)
 - Mattress width 48in= 10 Gallons (38 liters)
 - Mattress width 50in= 10.5 Gallons (40 liters)
- c. Drain the air out by lifting up the filling valve, apply pressure on the water pocket from the bottom to the top in order to force out any air.
- d. Close the AquaTop with the supplied closure/clamp (see below).



- ## 7. Final attachment of the AquaStar System:
- Complete the install by attaching a 2ft length of aluminum stripping after the closure has been tightened.





North Brook Farms, INC.
89 York Street
Auburn, NY 13021
Phone: 1.877.624.2638
Email: Info@Northbrookdairy.com
www.northbrookdairy.com

THE WARRANTY OF THE SUPERSTALL SYSTEM IS VALID ONLY WHEN THESE INSTALLATION INSTRUCTIONS ARE FOLLOWED.